

An historic Georgian town

THE NEW ALRESFORD

POCKET GUIDE



PLACES TO VISIT • SHOPPING GUIDE
EATING OUT • COUNTRY PUBS • BEAUTIFUL WALKS



Introduction

A handsome Georgian town, Alresford (pronounced 'Allsford') is the perfect place to spend a weekend. Ideal for gentle strolling, there is plenty to see in the town and by its picturesque riverside. Voted Country Life's 'Favourite Market Town' in the South East, Alresford is known for its specialist shops, old-fashioned inns, smart bistros and traditional tea rooms. It is also known as the UK's capital of watercress farming and as the home of the Mid-Hants Steam Railway – the Watercress Line. Why not spend a weekend in Alresford to enjoy our beautiful town?



Did
you know?

If you walk about 200 metres down Drove Lane you'll find the point used by tanks practising river crossings during World War II.



Alresford's clear chalk streams have attracted people for many centuries with evidence of Neolithic, Bronze Age, Iron Age and Roman occupation on numerous sites in the area.

Henri de Blois, brother of King Stephen and Bishop of Winchester, is credited with the idea of building the Great Weir or dam and designing the town of Novum Forum, which soon became New Alresford. He died before the completion of the project and Godfrey de Lucy, his successor as bishop (1189-1204), finished Alresford's T-shaped town centre as we see it today.

Did you know?

There are actually two Alresfords, the original settlement of Old Alresford to the north of the river and the town of New Alresford to the south. New Alresford is not as young as its name suggests, having been established as a new town by Bishop de Lucy during the Middle Ages.

During the reign of Henry VIII, clothiers, dyers and tanners were recorded as living here and fulling and corn mills operated. A fine example of a 13th century fulling mill straddles the River Alre (sometimes spelt Arle). Follow the riverside walk to discover this pretty thatched and timber-framed building, now a private residence.

The town's history is punctuated with fires despite the abundance of water in the area. The buildings you see today rose from the ashes of a series of great fires in the 17th century.

Watercress has always grown wild in the chalk streams and ditches in and around the town, and was probably picked and eaten by local people for centuries. It was far too perishable to be transported by horse and cart and so only became a commercial proposition when the railway arrived in the 1860s. You can still ride the Watercress Line today – hop on board one of the powerful steam locomotives for the 10-mile trip to Alton, or simply take in the sights, sounds and smells of the superbly restored station.

For more information on Alresford's fascinating past, visit www.alresford.org

Events at a glance

Alresford provides plenty to see and do all year round but if you're looking to discover the town's true character, why not time your visit to coincide with one of its annual special events, offering everything from a critically-acclaimed opera festival to a fun-packed celebration of our local salad leaf? Don't forget, you can keep up to date with everything that's happening in the town by clicking on www.alresford.org

Watercress Festival (May)



The UK's capital of watercress farming plays host to the annual Watercress Festival each May. Feast your senses and your taste buds at the fabulous watercress-themed farmers' market, meet the watercress farmers and tour the beds, or pick up a culinary tip or two by watching the celebrity chef cookery demonstrations on this wonderful day out for the whole family. www.watercressfestival.org

Grange Park Opera (June)

Fast acquiring cult status, Grange Park Opera is staged in the crumbling splendour of one of the finest neo-classical buildings in Britain. Northington Grange is an early 19th century Greek revival house set in beautiful and unchanged countryside. Each performance includes a 100-minute interval when guests are invited to dine or picnic in the grounds. www.thegrangefestival.co.uk



Alresford Music Festival (June)



The annual Alresford Music Festival provides the perfect platform for local musicians to perform alongside professionals and bring an entertaining day of fantastic live music of many styles for all ages. www.alresfordmusicfestival.com

Alresford Show (first Saturday in September)

BOB EATON



One of the region's most important agricultural fairs, the Alresford Show promises everything from displays of horses, livestock, dogs and vintage farm machinery to exhibitions of rare-breed poultry, bee-keeping and ferret-racing! If you're looking for an unusual gift, try the rural craft marquee for over 60 local handmade crafts including ceramics, jewellery, contemporary glass, knitwear and toys, or sniff out the finest local fare in the farm and produce tent. www.alresfordshow.co.uk

Country Sports Day (second Sunday in September)

Hampshire Country Sports Day is a full day of 'have a go' fun for all the family and arena displays and competitions for lovers of country pursuits. With main arena displays throughout the day and many trade stands to browse too.

www.hampshirecountrysportsday.co.uk

Alresford Fun Fair in Broad Street (October)

For one night only, in October, Broad Street comes to life with a full-size fun fair, thanks to a charter granted by King John and later confirmed by Edward II. Originally a traditional market, the event has evolved into a fun fair over the years. Local legend has it that the right to hold the fair fails if it does not take place every year. For dates and times visit www.alresford.org



Rotary Club Fireworks Display (5th November)



Follow the torch-lit procession from Broad Street to Arlebury Park and join in with the 'ooooohs' and 'aaaahs' at Alresford's annual fireworks display. www.alresford.org

Late Night Christmas Shopping (December)

Offering more than just extended opening hours, Alresford's late night Christmas shopping evening is a truly festive occasion. The whole town is decorated with lit Christmas trees, browse the traditional fayre, enjoy the street entertainment, warm your cockles with a glass of mulled wine, or simply soak up the party atmosphere. Check our website for this year's date. www.alresford.org



Market Day (Thursdays, all year round)



Alresford's small provisions market takes place in Broad Street on Thursdays. On the same morning, you can pick up homemade goodies at the Alresford Country Market in the Community Centre. www.towntrust.org.uk

Walks & trails

Alresford's beautiful riverside setting amidst rolling chalk downland makes it perfect walking territory for everyone from the casual post-pub-lunch stroller to the seasoned long-distance walker. Most leaflets mentioned are available from outlets around the town, the Goods Shed information point at the Mid-Hants Railway, or from Winchester Tourist Information Centre. You can also check out the walking pages at www.alresford.org and also www.hants.gov.uk/walking

Millennium Trail and Alre Valley Trail

If you want to find out more about Alresford's history, inhabitants and wildlife, pick up a free copy of the Millennium Trail and Alre Valley Trail, two self-guided walks that link together footpaths with illustrated boards around the town.

The Alre Valley Trail branches off the Millennium Trail, rejoining it about one and a half miles later. It lets you appreciate at closer hand Alresford's idyllic countryside setting. The route also takes you past the Eel House, one of the last remaining buildings of its kind, and once used to trap young eels as they set out to breed. The Eel House has been restored and is open at various times of the year. Days and times can be found on www.towntrust.org.uk



The Winchester Watercress Tour



Pick and choose your stops from this free self-guided trail through the Itchen and Meon Valleys, the home of the watercress industry for many years. Take in scenic views of rivers, watercress beds and villages, with the opportunity to sample tasty local food along the way.

Itchen Valley Churches Trail

This downloadable leaflet explores the landscape, history and local culture of the Itchen Valley and outlines self-guided trails for walkers and cyclists. It focuses on the architectural and historical identities of the unusual and varied styles of church along this pretty river valley. Visit www.visitwinchester.co.uk to download the leaflet.



Wayfarers' Walk



More beautiful countryside is on offer along the 72-mile Wayfarers' Walk, which follows some of the old tracks used by shepherds driving their animals to sheep fairs in Farnham and Alresford. For something more manageable, try any one of the five circular walks (between four and six miles long) signposted from the main route.

The Itchen Way

Following the River Itchen from its source near Hinton Ampner all the way to the busy port of Southampton, the 27-mile Itchen Way takes you through Hampshire's countryside at its very best. If you fancy a shorter stroll, try one of the individual circular walks that allow you to explore the river at a more leisurely pace. For more detailed information and maps go to www.eastleighramblers.org.uk



St Swithun's Way



The 34-mile St Swithun's Way runs between Winchester and Farnham, weaving its way east through the picturesque Itchen Valley. From Farnham, the route continues to Canterbury as the North Downs Way National Trail. St Swithun's Way waymarks are based on the shell, a common symbol of pilgrimage, and two croziers, representing St Swithun and St Thomas à Becket. A walker's pack is available at www3.hants.gov.uk/longdistance/st-swithuns-way

Other long-distance walking paths which pass close by to Alresford include the Clarendon Way, the South Downs Way and the Pilgrims' Trail. More information on these can be found at www.southdowns.gov.uk



Where to visit

Alresford's attractions are evident from the moment you arrive in the town. Colour-washed houses nestle alongside eye-catching specialist shops, whilst the clear chalk streams provide the perfect setting for scenic riverside walks. Delve a little deeper and you will find houses, churches and gardens to visit, as well as one of the country's best-preserved steam railways.

1 Hattingley Valley Wines

Wield Yard, Lower Wield
Tel: 01256 389 188



Specialists in award-winning English sparkling wines. Come and visit our cutting-edge winery for a tour and tasting to learn about the production of English sparkling wine. Tours run from April – September, call or visit our website for more details or to book. Head winemaker, Emma Rice, is two-time winner of Winemaker of the Year Trophy – buy our wines locally from independent wine merchants or online.

www.hattingleyvalley.co.uk

2 Historic Broad Street



A contender for the county's most beautiful street, tree-lined Broad Street combines a feast of Georgian colour-washed buildings with interesting shops and hostleries, still following Bishop de Lucy's medieval town plan.

www.alresford.org

3 The Watercress Line

The Railway Station, Alresford
Tel: 01962 733 810



Let off steam as you travel through 10 miles of beautiful Hampshire countryside where stations with period charm await you at this heritage attraction. Family events and dining trains throughout the year.

www.watercressline.co.uk

4 Chocolate Craft

Unit 1, Upton Park Farm, Old Alresford
Tel: 01962 732 731



Make chocolates like the professionals at our friendly & fun chocolate making workshops & parties.

www.chocolatecraft.co.uk

5 Riverside Walk



The riverside walk is a delight and, straddling the River Alre, you will see the thatched timber-framed Fulling Mill, built in the 13th century. Walk can be muddy in wet weather.

www.alresford.org

6 Old Alresford Pond

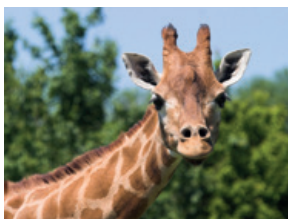


Formed in the 12th century as part of a project to dam the Alre stream, today it is home to wildfowl and otters. The sluices, called the 'shettles', have been recently restored and can be seen down the path to the right of The Globe or from the pub garden. It is said that this was a landing place for the Bishop of Winchester on his travels to and from his palace at Bishop's Sutton.

www.alresford.org

7 Marwell Zoo

Colden Common, Winchester
Tel: 01962 777 407



Explore the wonders of the natural world at Marwell Zoo, near Winchester. From ring-tailed coatis to majestic giraffes, endangered tigers to pygmy hippos, their 140-acre park is home to an incredible range of exotic and endangered species.

www.marwell.org.uk

8 Winchester Science Centre & Planetarium

Telegraph Way, Winchester,
Tel: 01962 863 791



The South of England's hands-on, interactive, science and technology centre, and largest standalone planetarium cinema in the UK! See our ad on page 22.

www.winchestersciencecentre.org

9 St John's Parish Church

West Street, Alresford
Tel: 01962 732 105



The parish church of New Alresford stands on a site where Christian worship has continued since 1200.

www.stjohnsalresford.org.uk

Did you know?

“ The pretty nearby village of Cheriton was once the scene of a ferocious Civil War battle fought in 1644. ”

10 Gilbert White & The Oates Collections

High Street, Selborne
Tel: 01420 511 275



Discover three fascinating stories about explorers of the Natural World. Explore the home of Gilbert White, the pioneering 18th century naturalist, set in 25 acres of magnificent parkland with restored gardens. Learn about Captain Oates and his epic journey to the South Pole. Free entry to our award-winning Tea Parlour and Gift Shop.

www.gilbertwhiteshouse.org.uk

11 Avington Park, near Winchester

Tel: 01962 779 260



Privately owned stately home in beautiful secluded grounds, open May to September, Sundays, Bank Holiday Mondays and Mondays in August from 2.30pm-5.30pm – last tour at 4.30pm. Tea bar serves homemade cakes and locally made ice cream. Open all year round for weddings, meetings, private parties, group visits and corporate events.

www.avingtonpark.co.uk

Where to shop

Elegant Alresford is awash with art galleries, specialist food stores, antiques and interiors shops as well as top-notch boutiques recommended by the likes of *Vogue* magazine and designer-to-the-stars Alice Temperley. Jostling for attention are all the traditional shops you would expect to find in a small market town, including butchers, fishmonger and a baker. Long-stay parking is available at the station, Perins Community School and Arlebury Park. So take your time and browse to your heart's content, and when you're ready for a pit-stop, put down your bags and rest your feet at one of the town's tempting array of cafés and tea rooms.

12 Pretty Woman Beauty Salon

5 East Street, Alresford
Tel: 01962 736 888



Boutique-style salon offering facials, massages, nails, hair removal and a luxury steam room, using Guinot, ESPA and Shellac beauty brands. Fun, friendly and experienced therapists handpicked just for you.

13 Delilah Boutique

34 West Street, Alresford
Tel: 01962 738 470



A stylish and individual womenswear boutique with a personal touch. Brands include: Masai Clothing, Ilse Jacobsen, Mos Mosh, In Wear, Saint Tropez and much more, including fabulous accessories.

www.delilahboutique.co.uk

14 Susie Watson Designs Ltd

16 West Street, Alresford
Tel: 01962 734 171



Enjoy our beautiful collection of handmade pottery, furniture, fabrics and interior furnishings for relaxed, elegant living. We offer a full interior design and curtain-making service to transform your home.

www.susiewatsonsdesigns.co.uk

15 Ragamuffin

2 Bakehouse Yard, West Street, Alresford
Tel: 01962 734 488



A beautiful children's store with clothing from birth to 12 years. Designs from across Europe and beyond. Always a friendly and helpful service. Open Monday – Saturday from 9.30am-5.00pm.

www.ragamuffin-uk.com

Where to shop



16 Hair Art

17 East Street, Alresford
Tel: 01962 736 398

At Hair Art we have a holistic approach to your well-being. We use only Aveda organically sourced products which are sustainable. All our staff have been chosen for their skill and professionalism.



17 Design Realities

36 West Street, Alresford
Tel: 01962 732 507

Be inspired and enticed by beautiful pieces for your home including handmade sofas and chairs, bespoke furniture, rugs, lighting, unique gifts and accessories. Design Realities offers wallpapers, paints, fabrics, curtain-making, upholstery and a full interior design service.

www.design-realities.co.uk



18 Moda Rosa

35 West Street, Alresford
Tel: 01962 733 277



Women's designer fashion in the heart of Hampshire. Daywear, special occasion and evening wear.

Armani, Paula Ka, Temperley, Paul Smith, Roksanda, Moschino, Riani, Amanda Wakeley, DVF, Marc Cain, Fabiana Filippi. Vivien Sheriff and Philip Treacy hats. Mon-Sat 9.30am-5.30pm.

www.modarosa.co.uk

19 Billy Goat

11 East Street, Alresford
Tel: 01962 733 926



This beautiful, award-winning children's shoe shop, has a fantastic range of quality shoes for children of all ages. Offering a professional shoe fitting service, friendly advice and a toy box to entertain little ones, you're sure to find the perfect pair of shoes.

www.billygoatshoes.co.uk

Map of New Alresford



Hellards Estate Agents are pleased to sponsor this Pocket Guide Map of New Alresford, which was designed by Henrietta Hellard.

Where to visit

	Page
1 Hattingley Valley Wines (10 mins by car)	8
2 Historic Broad Street	8
3 The Watercress Line	8
4 Chocolate Craft (5 mins by car)	8
5 Riverside Walk	8
6 Old Alresford Pond	9
7 Marwell Zoo (25 mins by car)	9
8 Winchester Science Centre and Planetarium (15 mins by car)	9
9 St John's Parish Church	9
10 Gilbert White's House and The Oates Collecton (25 mins by car)	9
11 Avington Park (15 mins by car)	9
30 The Pottery Pantry (10 mins by car)	16
31 Chocolate Craft (5 mins by car)	17
42 Winchester Science Centre and Planetarium (15 mins by car)	22

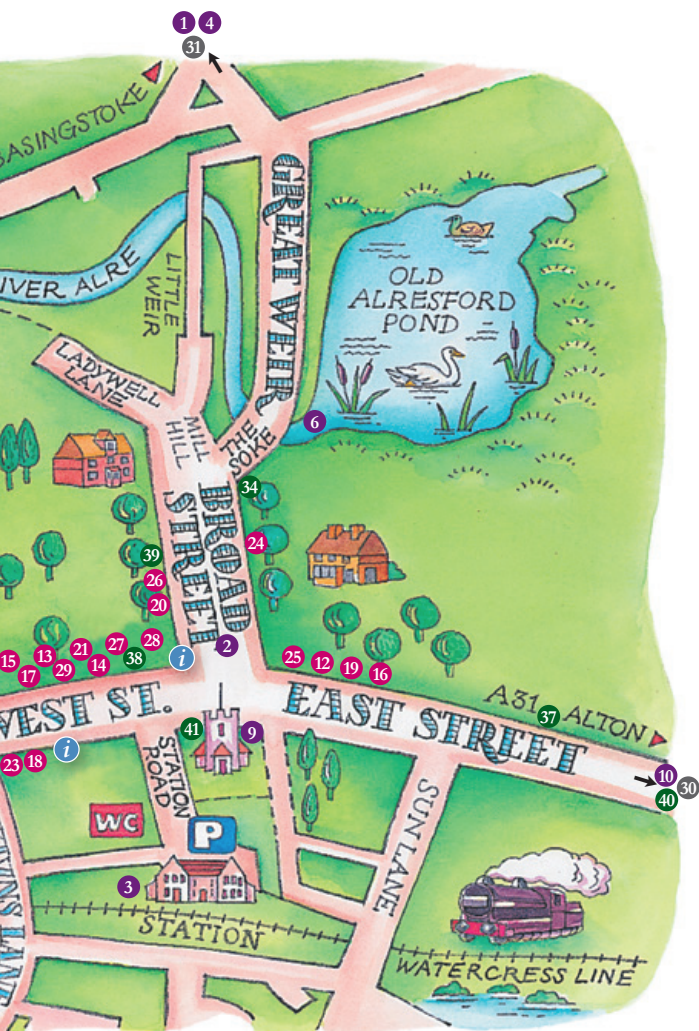
Where to shop

	Page
12 Pretty Women Beauty Salon	10
13 Delilah Boutique	10
14 Susie Watson Designs Ltd	10
15 Ragamuffin	10
16 Hair Art	11
17 Design Realities	11
18 Moda Rosa	11
19 Billy Goat	11
20 Sole Butchers	14

	Page
21 The Naked Grape	14
22 Itchen Valley Brewery	14
23 Alresford Chiropractic Clinic	14
24 Eddolls Carpets Ltd	14
25 Gibbons Solicitors	15
26 Hellards Estate Agents	15
27 Wildbunch Florists	15
28 C E Evans and Son	15
29 Alresford Beauty	15



Map of New Alresford



Where to eat		Page			Page
32	The Cricketers	18	38	The Bell	19
33	Tiffins Tea Rooms	18	39	Caracoli	19
34	The Globe	18	40	The Thai Lounge (5 mins by car)	20
35	The Shapla	19	41	The Swan Hotel	21
36	The Chestnut Horse (15 mins by car)	19			
37	Long Barn Home and Garden Store	19			



Information maps are positioned at the bus stops on both sides of West Street, and also at Perins car park, accessible from Jacklyns Lane.

Where to shop

20 Sole Butchers

5 Broad Street, Alresford
Tel: 01962 735 221



Come and say hello to the local butcher and game dealer. Award-winning Pork, watercress and ale sausages made from local produce. Beef and Watercress burgers. Award-winning pies. Ready meals. A variety of game when in season. Local freshly baked cakes.

www.solebutchersofalresford.co.uk

21 The Naked Grape

20 West Street, Alresford
Tel: 01962 732 002



Specialist independent wine merchant with a superb range of hand chosen wines, spirits and champagnes, all from small family estates, no brand names! From the thousands of wines we taste each year, we select only the best. Life's too short to drink bad wine.

www.thenakedgrape.co.uk

23 Alresford Chiropractic Clinic

49 West Street, Alresford
Tel: 01962 733 163

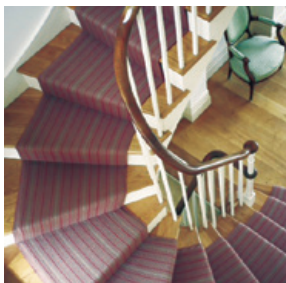


We are an established clinic known for quality service and reliable, fast results. Evening and weekend appointments. Safe parking, easily located on West Street, beside the Co-operative.

www.alresfordchiropractor.co.uk

24 Eddolls Carpets Ltd.

30 Broad Street, Alresford
Tel: 01962 735 715



The choice of flooring is huge; so we start by agreeing what will work best for you. We then make sure that the project is handled with professionalism, top quality service and is fun!

www.eddollscarpets.com

22 Itchen Valley Brewery

Unit D Prospect Commercial Park, New Alresford
Tel: 01962 735 111



Situated in the heart of Hampshire we produce an unrivalled range of award winning real ales with pure Hampshire water, yeast and barley along with the finest hops from around the country and world.

Brewery shop open
Mon to Fri 9.00am - 4.00pm
Sat - 10.00am - 1.00pm

www.itchenvalley.com



Where to shop

25 Gibbons Solicitors

3 East Street Alresford
Tel: 01962 736 926



Solicitors specialising in wills, powers of attorney, tax and estate planning

www.gibbonssolicitors.co.uk

26 Hellards Estate Agents

11 Broad Street, Alresford
Tel: 01962 736 333



Alresford's independent estate agent specialising in sales, letting and property management. Our friendly office has been handling property transactions in Alresford and the surrounding villages since 1988.

www.hellards.co.uk

27 Wildbunch Florists

14 West Street, Alresford
Tel: 01962 735 097



Wildbunch Florists; a shop full to bursting with all things flowery. An extensive selection of cut flowers, plants and interesting pots and vases. We offer bespoke floristry for all occasions including weddings, parties, christenings and funerals as well as gifts for your flower loving friends and family.

www.wildbunchflorists.co.uk

28 C E Evans & Son

8 West Street, Alresford
Tel: 01962 732 477



Established since 1912, we offer high quality meat, fish and a delicatessen.

Homemade ready meals and puddings freshly prepared to make life easier. First class catering service available for special events.

www.ceevansandson.co.uk

29 Alresford Beauty

24a West Street, Alresford
Tel: 01962 735 553



Established in 1994, we offer treatments by Clarins and Elemis, spray tanning by St Tropez, Microdermabrasions by Crystal Clear, Jessica and artistic gel overlays for nails. We also have a shop full of gifts!

www.alresfordbeauty.co.uk



The Pottery Pantry

A family run business with a passion for creativity

T: 01420 561 645



Children's & adults parties, girly nights & after school clubs, corporate events, wedding presents, gifts, seasonal items, soft play area, tea room serving homemade cakes, snacks & light lunches.

Unit 6, Lower Solderidge Park, Solderidge Road,
Medstead, Alton GU34 5JF
thepotterypantry@gmail.com www.thepotterypantry.co.uk

CHOCOLATE CRAFT

Workshops.



MAKE CHOCOLATES LIKE THE PROFESSIONALS

Have you ever wondered what it would be like to be a chocolatier? Well now you can find out!

Have fun with family, friends, or people you haven't yet met creating your own unique handmade chocolates using the finest ingredients.

Learn the art of piping with chocolate & decorate your very own lolly. Then professionally package your goodies to wow family & friends alike!



CONTACT US

To book a place on any of our workshops:

Visit: www.chocolatecraft.co.uk/chocolate-workshops

Call: 01962 732731

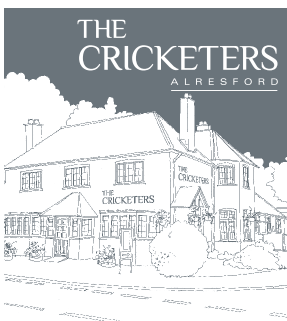
Email: sales@chocolatecraft.co.uk

Local food & drink

Watercress has made its mark on Alresford with acres of beds spanning the clear chalk stream river valleys surrounding the town. Don't miss the annual Watercress Festival, held in the town each May at the start of the watercress season. You can even ride the Mid-Hants Steam Railway – popularly known as the Watercress Line – in honour of its former role in transporting fresh watercress to London in days gone by. These days, it operates real ale and dining trains on special occasions during the year. Salad leaves aside, Alresford offers lovers of other fine foods a surprising number of excellent eateries, many of which showcase the best of the region's produce. Follow your tastebuds to the town for a complete gourmet experience.

32 The Cricketers

Jadlyn's Lane, Alresford
Tel: 01962 732 463



The Cricketers is a charming traditional pub situated on Jacklyn's Lane, Alresford. Whether you're here for a lunchtime special or an evening drink with friends, visiting us is always a great experience. Our traditional pizza oven, extensive garden & children's play area are all great attractions for family gatherings.

www.thecricketersalresford.com

34 The Globe

The Soke (off Broad Street), Alresford
Tel: 01962 733 118



Welcome to The Globe, a beautiful 17th century coaching inn lovingly restored by its local owner. The Globe's large garden overlooks Alresford's historic 13th century pond, best enjoyed sitting by one of our impressive inglenook fireplaces.

www.theglobealresford.com



33 Tiffin Tea Rooms

50 West Street, Alresford
Tel: 01962 734 394



Award-winning family-run tea room, specialising in over 40 loose teas, fine chocolates and locally-produced ice creams. Serving homemade cakes, light lunches using local products, traditional afternoon teas, cream teas, all served on vintage bone china. Courtyard seating available, vintage tea parties available for outside events.



35 Shapla Indian Cuisine

60 West Street, Alresford
Tel: 01962 732 134



Superb cuisine and first-class service in an historic building. We have served the community since 1993 and pride ourselves on using local produce. Excellent reputation for event catering. The restaurant presents a philosophy of traditional and modern indian food blended together with the subtle influences from a British food loving nation.

15% discount for takeaway service.

www.theshapla.com

36 The Chestnut Horse

Easton Lane, Easton SO21 1EG
Tel: 01962 779 257



This lovely 16th Century pub is just 4 miles outside of Alresford and is full of old English charm. À la carte menu.

2 courses for £12.00. Alfresco dining.

Weddings and large parties catered for.

Children and dogs welcome. Award-winning English Beers.

www.thechestnuthorse.com



38 The Bell

12 West Street, Alresford
Tel: 01962 732 429



- Charming 17th century coaching inn
- 7 en-suite character bedrooms
- Delicious food, local produce
- À la carte • 2 course £12.50 specials
- Baguettes • Eclectic drinks list
- Candlelit dining • Log fire
- Summer courtyard

www.bellalresford.com

39 Caracoli

15 Broad Street, Alresford
Tel: 01962 738 730



Caracoli is a vibrant coffee shop and extensive food store serving excellent coffee and freshly baked cakes as well as having a seasonal lunch menu and Sunday brunch. Ample seating both inside and out. Open every day.

www.caracoli.co.uk

37 Long Barn Home and Garden Store

The Old Sheep Fair,
Bishop's Sutton Road, Alresford
Tel: 01962 738 684



Long Barn is set in 3 acres of lavender and English country landscaping. Visit our home and garden store with café. Wide range of plants, gardening goods, gifts and food.

Open 7 days. Plants • Gardening Accessories

• Gifts • Local foods

www.longbarn.co.uk



THAI LOUNGE

RESTAURANT & WINE BAR



We welcome you to the Thai Lounge for delicious Eastern cuisine in contemporary surroundings

With the delicate aroma of authentic Thai spices, our dishes are created using the finest, fresh seasonal produce sourced direct from Thailand, paired with our extensive wine list, specifically chosen to compliment our fragrant menu.

Our expertise and first class service makes the Thai Lounge the perfect venue for either large parties and groups or intimate dining.

Takeaway menu available - 10% discount



Opening hours:

Monday to Saturday: Lunch 12pm till 2.30pm
Dinner 5.30pm till 10.30pm

Sunday: Lunch 12pm till 3.00pm
Dinner 5.30pm till 10.00pm

www.thailoungeropley.com

Tel: 01962 773600 / 01962 772006



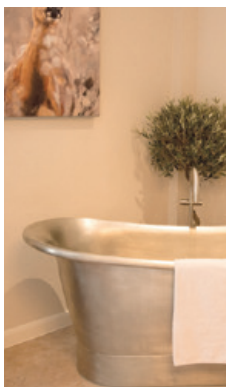
Alresford's charming 18th century hotel...

At The Swan Hotel we pride ourselves in sourcing the best available seasonal local produce; including our very own Manor Farm Beef. Our traditional and innovative dishes are created freshly each day, we cater for all dietary needs and our breakfasts are award winning!

Enjoy premium beers, real ales and delicious carefully selected wines in our friendly tap bar, or the tranquil snug area and on a perfect Hampshire Summer's day dine alfresco in our courtyard garden.

Planning a longer stay in Hampshire...

Our 22 en-suite bedrooms offer the perfect night's relaxation after exploring the beautiful local area, whether for business or pleasure.



“Perfect for an overnight stay in a quaint Hampshire town. Excellent location with parking. Friendly, local staff and cosy atmosphere...”

Tripadvisor 2016

www.swanhotelalresford.com

T: 01962 732 302 E: swanhotel@btinternet.com
11 West Street, Alresford, Hampshire, SO24 9AD



WINCHESTER SCIENCE CENTRE AND PLANETARIUM



A great day out! 100 hands-on exhibits
New Invention Studio | **Live** science shows
UK's largest standalone planetarium



Useful information

Accommodation

For a full list of assessed accommodation in the Alresford area go to www.visitwinchester.co.uk
If you need more help, call the **Winchester Tourist Information Centre reservation service** on **01962 840 500**.

Banks

Lloyds TSB

Cashpoint - West Street, Alresford

Southern Co-operative & Post Office

Cashpoint - West Street, Alresford

Council

New Alresford Town Council

Arlebury Park, The Avenue, Alresford
Contact for lost and found.

Tel: **01962 732 079**

Police Station

Alresford Community Police Office

Tel: **101** – the Police non-emergency number when it's less urgent than a **999** call. www.police.uk/contact/101

Hospitals

Alton Community Hospital

Alton

Tel: **030 0003 2196**

North Hants Hospital

Basingstoke

Tel: **01256 473 202**

Royal Hampshire County Hospital

Winchester

Tel: **01962 863 535**

Surgeries

The Alresford Surgery

Station Road, Alresford

Tel: **01962 732 345**

Prescriptions: Mon-Fri 8.30am-6.30pm

www.thealresfordsurgery.co.uk

Dentist

Alresford Dental Care

4 Pound Hill, Alresford

Tel: **01962 733 580**

www.alresforddentalcare.co.uk

ADP Dental

38 West Street, Alresford

Tel: **01962 733 173**

www.thealresfordsurgery.co.uk

Chemists

Alresford Pharmacy

Broad Street, Alresford

Mon - Fri: 9am - 6.30pm Sat: 9am - 5pm

Tel: **01962 732 858**

Wessex Chemist

Broad Street, Alresford

Mon - Fri: 9am - 5.30pm Sat: 9am - 5pm

Tel: **01962 732 445**

Transport

Stagecoach

Tel: **0345 121 0190**

www.stagecoach.com

National Express

Tel: **0871 781 8181**

www.nationalexpress.com

National Rail Enquiry

Tel: **0871 781 8181**

www.nationalrail.co.uk

Alton Station

Tel: **01420 542 946**

Watercress Line

www.watercressline.co.uk

Key:  Wheelchair access

 Partial wheelchair access

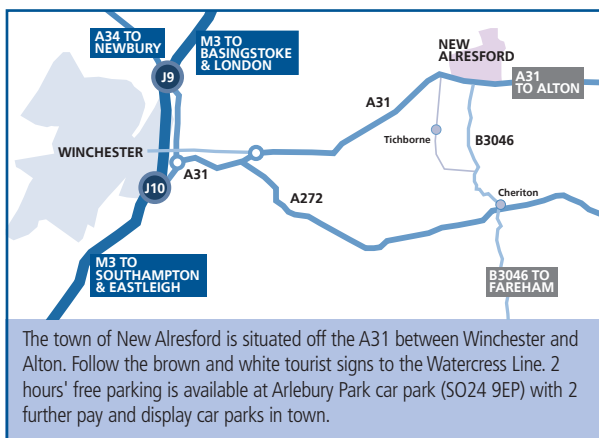


Alresford Fair, 1920



Broad Street, 1930

Travelling to New Alresford



By steam railway

10 miles from Alton Station. **Tel: 01962 733 810** or go to **www.watercressline.co.uk** for running times.

By Bus

Regular services from Winchester, Southampton, Alton and Petersfield.
Tel: 0345 121 0190 or go to **www.stagecoachbus.com** for information.
Cango (rural bus service): **Tel: 0845 602 4135** or visit **www3.hants.gov.uk**.

Facilities

Toilets (including disabled facilities) in Station Road. • **Pay and display parking at Arlebury Park (SO24 9EP) is free for the first 2 hours.**
• Pay and display parking at the railway station is free on Sundays and some Bank Holidays • Pay and display parking at Perins Community School, accessible from Jacklyn's Lane and Winchester Road • 160+ on-street town centre parking spaces with time limits.

Further information

Winchester Tourist Information Centre, Guildhall, High Street, Winchester Hampshire SO23 9GH. Tel: 01962 840 500 | Fax: 01962 850 348
Email: tourism@winchester.gov.uk | www.visitwinchester.co.uk
www.alresford.org | www.alresfordchamber.co.uk | There are also visitor information points at Alresford Station car park, Perins Community School car park and at both bus stops on West Street.

If you would like to receive this leaflet in another format, Tel: 01962 840 500 or email: marketing@winchester.gov.uk